

To Provide Maintenance and Chemical Water Treatment Services
For the Air Conditioning & Ventilation System at the Third Judicial Circuit

Attachment 2

Equipment Diagrams

Chiller-1 Interface

Run Status

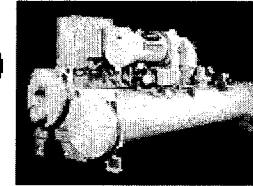
Chiller Start/Stop Off
 Occupied On
 Active CHW Setpoint 44.0 ° F
 Percent Total Capacity 0.0 %
 Active Demand Limit 100.0 %

Relay/Flow Status

Chilled Water Flow On
 Cond Water Flow On
 Oil Pump Relay Off
 Comp Start Relay Off



Bacnet Interface by ALC



Run Status

Run Status 1 = Ready
 Control Mode 3 = CCN
 System Alert/Alarm 0 = Normal

Power

Motor Kilowatts 0.0 kW
 Motor Kilowatt-Hours 201366.1 kWh
 Line Current Phase 1 0.0 amps
 Line Current Phase 2 0.0 amps
 Line Current Phase 3 0.0 amps
 Line Voltage Phase 1 473.0 volts
 Line Voltage Phase 2 477.0 volts
 Line Voltage Phase 3 476.0 volts
 Ground Fault Phase 1 0.0 amps
 Ground Fault Phase 2 0.0 amps
 Ground Fault Phase 3 0.0 amps
 Average Line Current 0.0 amps
 Power Factor 1.0

Compressor

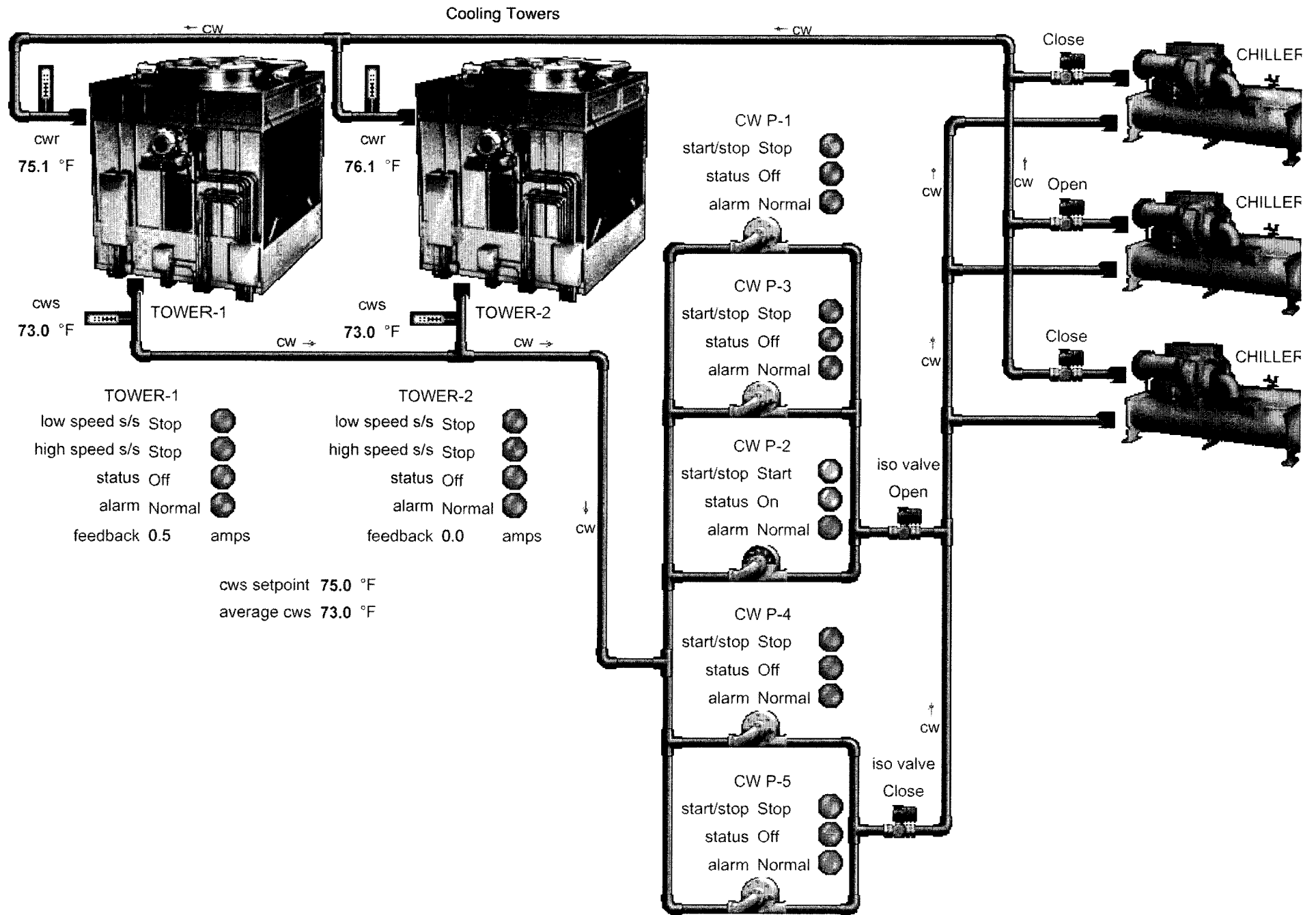
Actual Guide Vane Pos 0.0 %
 Target Guide Vane Pos 0.0 %
 Oil Sump Temp 141.8 ° F
 Oil Pump Delta P -2.2 psi
 Comp Discharge Temp 129.8 ° F
 Comp Thrust Brg Temp 139.9 ° F
 Motor Winding Temp 127.4 ° F
 Target VFD Speed 0.0 %
 Actual VFD Speed 0.0 %
 Frequency 60.0 Hz
 Comp Ontime 2314.6 hrs
 Total Comp Starts 332.00

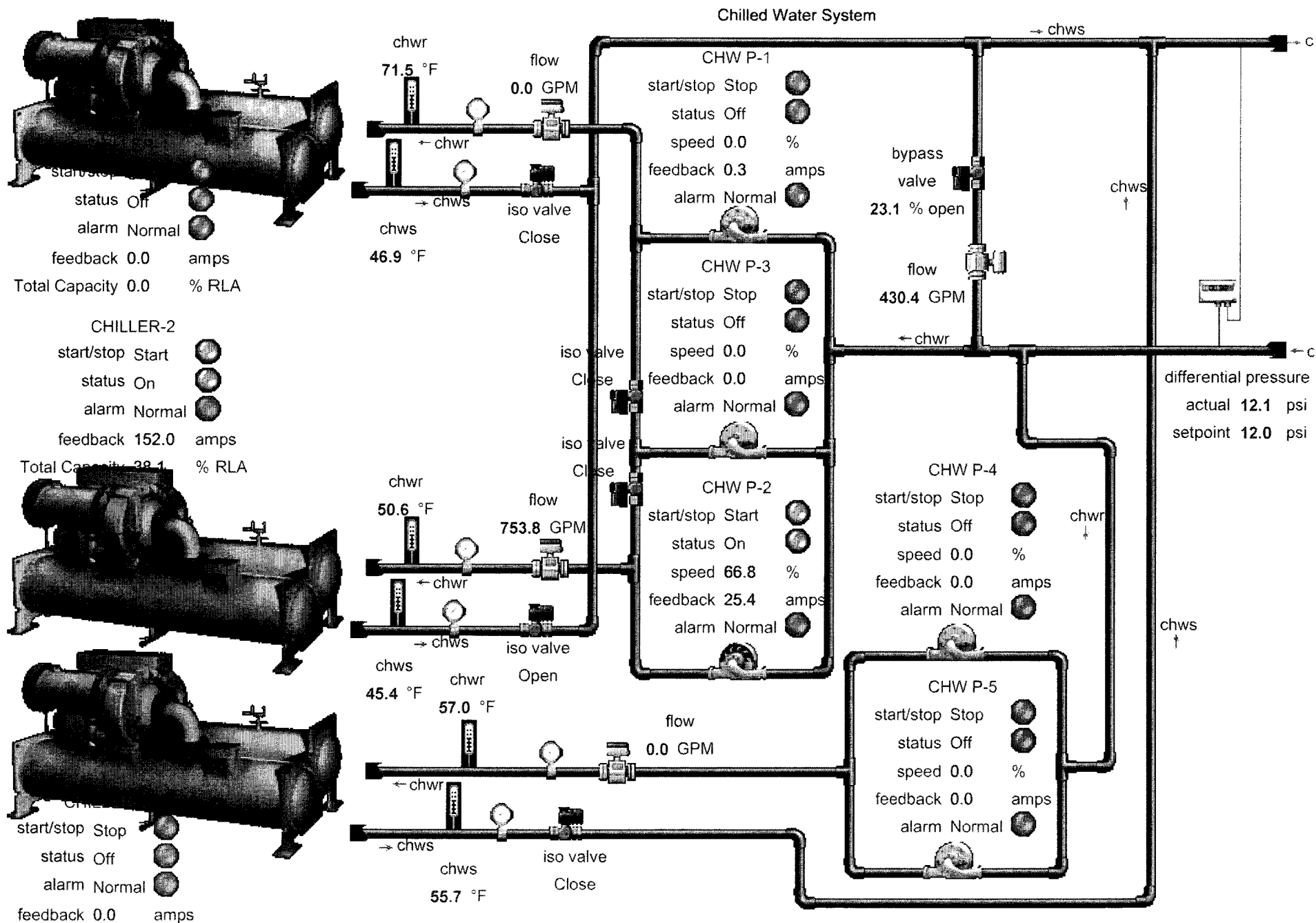
Evaporator

Entering (CHWS) Fluid Temp 71.3 ° F
 Leaving (CHWS) Fluid Temp 70.6 ° F
 Evaporator Refrig Temp 73.6 ° F
 Evaporator Pressure 76.6 psi
 Evaporator Approach 0.2 ° F

Condenser

Entering (CWS) Cond Temp 73.8 ° F
 Leaving (CWS) Cond Temp 74.6 ° F
 Cond Refrig Temp 73.4 ° F
 Cond Pressure 76.4 psi
 Cond Approach 0.2 ° F







76.8 °F
58.9 %rh

AHU 1-1/ Vav Ahu

442 kW

